



## FLIR E4, E5, E6, E8 with MSX® Enhancement

- Display: 3" color LCD
- On-board 640 x 480 Digital Camera
- Easy-to-use, weighs only 1.2lbs
- 2% accuracy
- File format: Radiometric jpg
- Swappable Li-ion Battery with 4 hour life
- Spot Measurement mode
- Simultaneous storage of IR/Visual/MSX images
- Picture in Picture image (E6 and E8)
- Manual level and span thermal tuning (E6 and E8)
- Area Box Measurement mode (E5, E6 and E8)

Each includes power supply/charger with four plugs, rechargeable battery, FLIR Tools software, USB cable, and hard transport case. E8 also includes extra battery and external battery charger.

### FLIR E4

- 4,800 pixels (80 x 60)

### FLIR E5

- 10,800 pixels (120 x 90)

### FLIR E6

- 19,200 pixels (160 x 120)

### FLIR E8

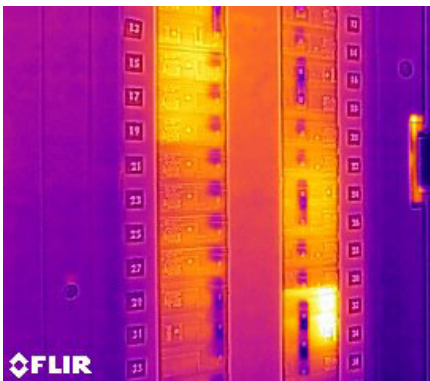
- 76,800 pixels (320 x 240)



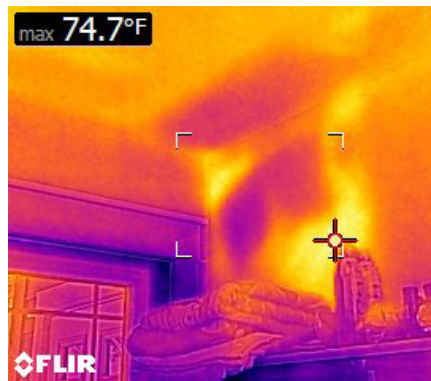
## New Exclusive MSX Thermal Imaging Technology Made Affordable for Everyday Use

What is MSX?

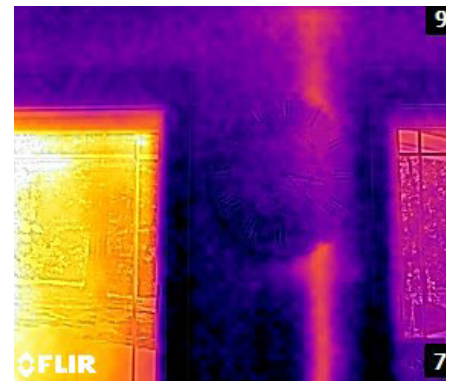
Multi-Spectral Dynamic Imaging (MSX) for easier interpretation of an image - adds visible spectrum definition to IR images by detecting the edges of objects and including that detail in the thermal image. Text becomes clearly visible so that you can read a label or identifier within the IR image. This exclusive function provides extraordinary thermal detail that instantly highlights and orients problem locations and eliminates the need to refer back to a visual image for detail.



Breaker Panel  
E8 with MSX



Missing Insulation – Summer Day  
E6 with MSX



Warm Drain Pipe in Wall  
E4 with MSX

# Imaging Specifications

FEATURES	FLIR E4	FLIR E5	FLIR E6	FLIR E8
IR Pixel Resolution	4,800 (80 x 60)	10,800 (120 x 90)	19,200 (160 x 120)	76,800 (320 x 240)
Thermal Sensitivity	<0.15°C	<0.10°C	<0.06°C	<0.06°C
Temperature Range	-4 to 482°F (-20 to 250°C)			
Measurement modes	Centerspot	Centerspot, Area Box, Auto Hot/Cold detection	Centerspot, Area Box, Auto Hot/Cold detection	Centerspot, Area Box, Auto Hot/Cold detection
Frame Rate	9Hz			
Field of View	45° x 34°			
Focus	Focus free			
Auto Hot/Cold Detection	No	Auto min/max markers within area	Auto min/max markers within area	Auto min/max markers within area



**Included in All Models**



**Additional Accessories Included with E8**



**Optional Accessories**

## Ordering Information

- 63901-0101 ..... FLIR E4 Compact Thermal Imaging Infrared Camera with MSX® Enhancement (80x60)
- 63901-0101-NIST ..... FLIR E4 with Certificate Traceable to NIST
- 63905-0501 ..... FLIR E5 Compact Thermal Imaging Infrared Camera with MSX® Enhancement (120x90)
- 63905-0501-NIST ..... FLIR E5 with Certificate Traceable to NIST
- 63902-0202 ..... FLIR E6 Compact Thermal Imaging Infrared Camera with MSX® Enhancement (160x120)
- 63902-0202-NIST ..... FLIR E6 with Certificate Traceable to NIST
- 63903-0303 ..... FLIR E8 Compact Thermal Imaging Infrared Camera with MSX® Enhancement (320x240)
- 63903-0303-NIST ..... FLIR E8 with Certificate Traceable to NIST

### ACCESSORIES

- T198529 ..... Pouch
- T198530 ..... Replacement battery
- T198531 ..... External battery charger
- T198532 ..... Car Charger
- T198534 ..... Power supply/charger with EU, UK, US and AU plugs
- T198533 ..... USB cable
- T198528 ..... Hard Transport Case



10-Year Detector Protection  
5-Year Battery  
2-Year Parts & Labor

