

# UHF RFID Antennas Solutions

Boost your product efficiency  
for a wide range of applications.

**unitech**  
because we care



[www.ute.com](http://www.ute.com)



- **Accurate**
- **Visibility**
- **Higher Efficiency**

# Boost your product efficiency with UHF RFID Antenna Solutions

unitech's antenna portfolio delivers the next level of UHF RFID solutions that covers all transmission ranges and types to meet the industrial applications. It solves the problem of tracking large quantities of products in the warehouse, logistics, manufacturing, retail and intelligent transportation.

**Accurate | Visibility | Higher Efficiency**



unitech goes beyond the expectations of users allowing them to better manage big data in ever more innovative ways.

Utilizing these products, industry applications can be divided into these major categories:

- Smart warehousing & logistics**
- Automated shipment tracking system
  - Warehouse inventory
  - Asset tracking management

- Smart manufacturing**
- Conveyor belts
  - Supply chain management

- Smart retail**
- Smart shelves
  - Counter checkout
  - Anti-Theft Gates

- Intelligent transportation & cold chain management**
- Fixed portal
  - Parking lot management
  - Cold chain data monitoring

## ANP100 1-port RFID Antenna

ANP100 is a 1-port RFID antenna with right-hand circular polarization. Featuring a compact design, it is flexible to be integrated into warehouse racks and smart shelves. This device has IP65 rating certification, completely sealing durable housing against indoor or outdoor environments.



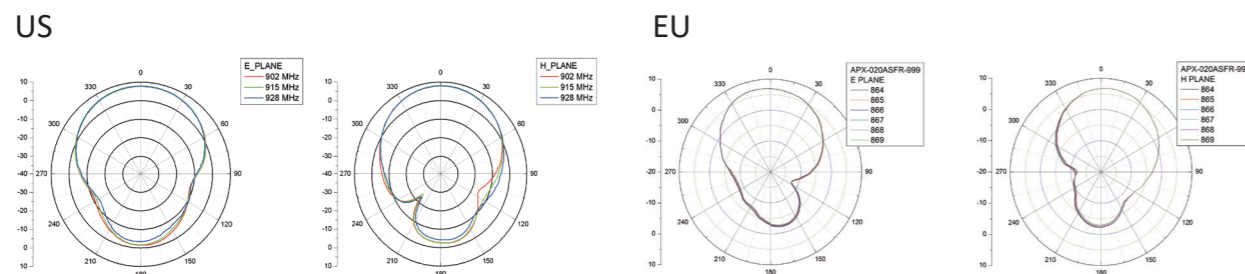
Smart Shelves    Inventory Racks    Forklift Mount

### Feature

- Lightweight & convenient installation
- Available in right hand circularly polarization
- Waterproof: IP65 rating
- +8 dBi Gain
- SMA connector
- Outdoor and indoor applications

### ANP100 Specification

Polarization	Right-Hand Circular
Dimensions	180 * 200 * 31.5 mm
Connector	SMA Jack
Connector Location	Bottom
Weight	0.4 KG
Frequency Range	US: 902 - 928 MHz ; EU: 865 - 868 MHz
VSWR	Less than 1.5 : 1
Gain	8 dBi
Impedance	50 Ω
Operating Temperature	-20°C ~ 60°C
IP Sealing	IP65
What comes in the box	1 unit in a box
SKUs	205367G (US); 205488G (EU)
Accessories	For RS804 3 M RF Cable: SMA male to RP TNC male (PN#1550-905894G ) 10 M RF Cable: SMA male to RP TNC male (PN#1550-905895G ) For RS200 3 M RF Cable: SMA male to RP SMA male(PN#1550-900102G ) 15 M RF Cable: SMA male to RP SMA male (PN#1550-905898G)



## ANP300 1-port RFID Antenna

ANP300 is a 1-port RFID antenna with right-hand circular polarization. Its IP66 rating and wide operating temperature design ensures stable performance in a challenging environment. It is suitable for applications in parking lot management, asset tracking management and cold chain data monitoring.



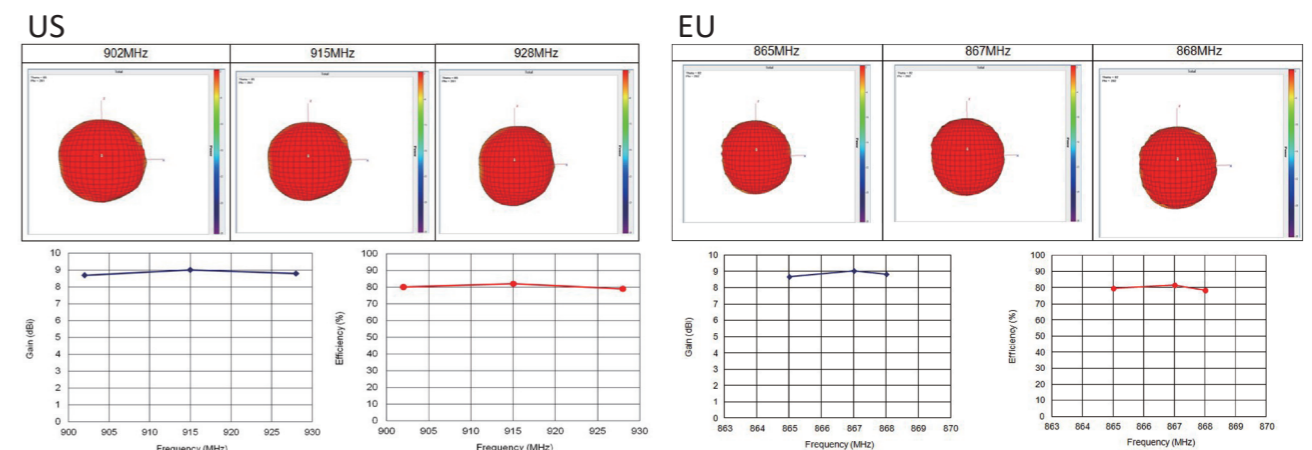
Parking lot Management    Asset Tracking    Cold chain Data Monitoring

### Feature

- Wide operating temperature : -40°C ~ 85°C
- Available in right hand circularly polarization
- Waterproof: IP66 rating
- +9 dBi Gain
- N Jack connector
- Outdoor applications

### ANP300 Specification

Polarization	Right-Hand Circular
Dimensions	260 * 260 * 44mm
Connector	N Jack
Connector Location	Bottom
Weight	0.9 KG
Frequency Range	US: 902 - 928 MHz ; EU: 865 - 868 MHz
VSWR	Less than 1.5 : 1
Gain	9 dBi
Impedance	50 Ω
Operating Temperature	-40°C ~ 85°C
IP Sealing	IP66
What comes in the box	1 unit in a box
SKUs	4060-900007G (US) ; 4060-900008G (EU)
Accessories	For RS804 3 M RF Cable: N male to RP TNC male (PN#1550-905912G ) 10 M RF Cable: N male to RP TNC male (PN#1550-905913G)



## ANW100

### 1-port RFID Antenna

ANW100 is a multi-linear polarized antenna that is easy to be embedded on the ceiling and wall. There are two versions available, one is for (US) 902 - 928 MHz, and the other one is for (EU) 865 - 868 MHz. Each version has two dimensions for optional choice. It is suitable for clothing, shoes, personnel access control and library shelves applications.



Smart Shelves



Library Shelves



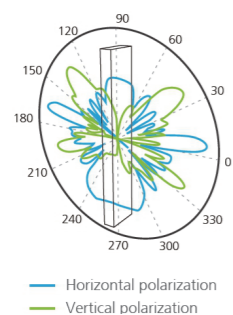
Personnel Access Control

#### Feature

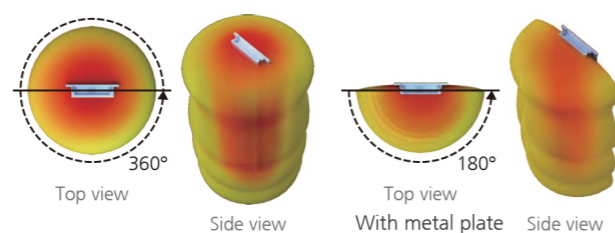
- Easy installation with various dimensions.
- Multi-linear polarized antenna
- 3.5 dBi / 4.5 dBi for option
- RP-TNC jack connector
- Indoor applications

#### ANW100 Specification

Polarization	Multi-linear
Dimensions	US: Dimension 1: 910 * 230 * 43m Dimension 2: 1,550 * 230 * 43mm EU: Dimension 1: 1,000 * 230 * 43 mm Dimension 2: 1,770 * 230 * 43 mm
Connector	RP-TNC Jack
Connector Location	Side
Weight	US & EU Dimension 1: 0.8 KG ; US & EU Dimension 2: 1.4 KG
Frequency Range	US: 902 - 928 MHz ; EU: 865 - 868 MHz
VSWR	Less than 1.7 : 1
Gain	US & EU Dimension 1: 3.5 dBi ; US & EU Dimension 2: 4.5 dBi
Impedance	50 Ω
Operating Temperature	-20°C ~ 60°C
What comes in the box	2 units in a box
SKUs	Dimension 1 : 4060-900001G (US) ; 4060-900002G (EU) Dimension 2 : 4060-900009G (US) ; 4060-900010G (EU)
Accessories	For RS804 3 M RF Cable: RP TNC male to RP TNC male (PN#1550-905910G ) 10 M RF Cable: RP TNC male to RP TNC male (PN#1550-905911G )



— Horizontal polarization  
— Vertical polarization



3D Pattern

## ANA300

### 2-Port RFID Antenna

ANA300 is a 2-port antenna with multi-linear polarization. Each ANA300 includes 2 antenna elements. Featuring plug and play system, it features easy and fast installation. Installed in pairs and it delivers extensive coverage through its wide plate design. It is ideal for anti-shelf gates, warehouse fixed portal and logistic dock door applications.



Anti-theft Gates



Dock Door



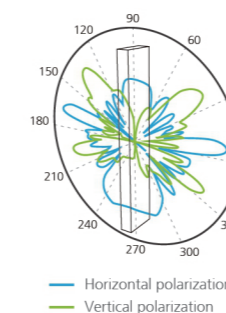
Fixed Portal

#### Feature

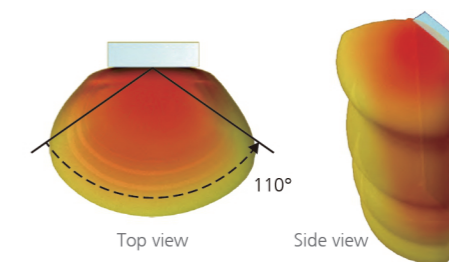
- Plug & Play: Easy and fast installation
- Multi-linear polarized antenna
- Gain Value 5.5dBi
- RP-TNC jack connector
- Indoor applications

#### ANA300 Specification

Polarization	Multi-linear
Dimensions	US: 1,300 * 235 * 90mm EU: 1,320 * 235 * 90 mm
Connector	RP-TNC Jack
Connector Location	Top
Frequency Range	US: 902 - 928 MHz ; EU: 865 - 868 MHz
VSWR	Less than 1.7 : 1
Gain	5.5 dBi
Impedance	50 Ω
Operating Temperature	-20°C ~ 60°C
What comes in the box	2 units in a box
SKUs	4060-900003G (US) ; 4060-900004G (EU)
Accessories	For RS804 3 M RF Cable : RP TNC male to RP TNC male (PN#1550-905910G ) 10 M RF Cable : RP TNC male to RP TNC male (PN#1550-905911G )



— Horizontal polarization  
— Vertical polarization



3D Pattern

## ANT500 2-Port RFID Antenna

ANT500 is a 2-port antenna with multi-linear polarization. Equipped with special tunnel design, each ANT500 allows the major reading in a certain zone and avoids reading outside the tunnel. It features easy and fast installation that is ideal for manufacturing production line conveyor, luggage tracking management and automated shipment tracking applications.



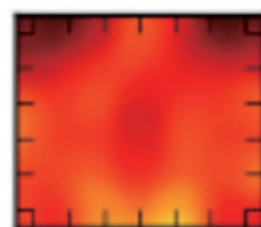
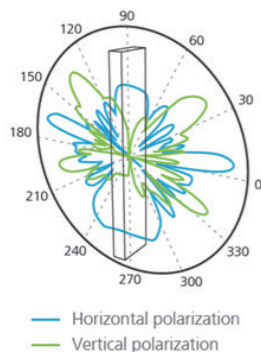
Automated Shipment Tracking  
Luggage Management  
Conveyor Belts

### Feature

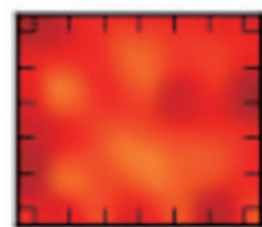
- Includes 4 antenna elements in one tunnel
- Special tunnel design allows easy installation and accurate reading
- Multi-linear polarized antenna
- Gain Value 5.5dBi
- RP-TNC jack connector
- Indoor applications

### ANT500 Specification

Polarization	Multi-linear
Dimensions	600 * 800 * 650 mm
Connector	RP-TNC Jack
Connector Location	Top
Weight	25 KG
Frequency Range	US: 902 - 928 MHz ; EU: 865 - 868 MHz
VSWR	Less than 1.7 : 1
Gain	5.5 dBi
Impedance	50 Ω
Operating Temperature	-20°C ~ 60°C
What comes in the box	1 unit in a box
SKUs	4060-900005G (US) ; 4060-900006G (EU)
Accessories	For RS804 3 M RF Cable: RP TNC male to RP TNC male (PN#1550-905910G ) 10 M RF Cable: RP TNC male to RP TNC male (PN#1550-905911G)



H-pol



V-pol



For more information on unitech RFID UHF Antennas, please visit [www.ute.com](http://www.ute.com)



#### Headquarters

Taipei, Taiwan  
<http://www.ute.com> e-mail: [info@hq.ute.com](mailto:info@hq.ute.com)

#### unitech America

Los Angeles  
<http://us.ute.com> e-mail: [info@us.ute.com](mailto:info@us.ute.com)  
<http://can.ute.com> info: [info@can.ute.com](mailto:info@can.ute.com)  
Mexico  
<http://latin.ute.com> e-mail: [info@latin.ute.com](mailto:info@latin.ute.com)

#### unitech Asia Pacific & Middle East

Taipei  
<http://apac.ute.com> info: [info@apac.ute.com](mailto:info@apac.ute.com) / [info@india.ute.com](mailto:info@india.ute.com)  
<http://mideast.ute.com> info: [info@mideast.ute.com](mailto:info@mideast.ute.com)

#### unitech Europe

Tilburg / Netherlands  
<http://eu.ute.com> e-mail: [info@eu.ute.com](mailto:info@eu.ute.com)

#### unitech Japan

Tokyo  
<http://jp.ute.com> e-mail: [info@jp.ute.com](mailto:info@jp.ute.com)

#### unitech Greater China

Beijing, Shanghai, Guang Zhou, Xiamen  
<http://cn.ute.com> info: [info@cn.ute.com](mailto:info@cn.ute.com)  
Taipei <http://tw.ute.com> info: [info@tw.ute.com](mailto:info@tw.ute.com)

